



## BUCKS COUNTY PRISON OVERSIGHT BOARD REPORT



The Prison Oversight Board Report for October 2020 is submitted herein.

### **Prison Oversight Board Members**

**Commissioner Robert J. Harvie, Jr., Chair**

**Neale Dougherty, Controller, Secretary**

**Commissioner Diane M. Ellis-Marseglia, LCSW, Vice Chair**

**Commissioner Gene DiGirolamo**

**Hon. Wallace H. Bateman, President Judge**

**Matthew D. Weintraub, District Attorney**

**Milton Warrell, Sheriff**

**Christine A. Shenk, Chief, Adult Probation and Parole**

**Ann Russavage-Faust, Public Defender**

**Karen Dopson, Citizen Board Member**

**Daniel H. Grace, Citizen Board Member**

**Sara Webster, Esq., Citizen Board Member**

# PRISON OVERSIGHT BOARD REPORT INDEX

Section 1.	<b>DEPARTMENT of CORRECTIONS</b>	<b>Page</b>
	Inmate Census	1.
	Average Historical Population Trends	2.
	Average Monthly Female Population Trends	3.
	Commitments vs. Discharges Statistic and Graph	4.
	Commitment Summary Statistic and Graphs	5.
	Prisoners by Locations Serving Over 2 yrs. Sentence	6.
	Drug and Alcohol Report	7, 8.
	Correctional Mental Health Report	8.
	Correctional Health Care Report	9.
	Training Academy Report	10.
	Tours, Recognitions & Official Visits	10.
	Misconducts	10.
	Project(s) Information	10.
	Business Office	11.
	Treatment Program Services	11.
Section 2.	<b>CORRECTIONAL FACILITY</b>	
	JPC Meeting Information	12.
	Library Usage Report	12.
Section 3.	<b>COMMUNITY CORRECTIONS</b>	
	Supervision Groups Graphed Monthly Trends	13.
	Community Corrections Employment	13.
	Work Release Status Report	14,15.
	Walk Away Report	15.
	Program Services	16.
	JPC Meeting Information	16.
	Garden Chart	17.

**Section #1. DEPARTMENT OF CORRECTIONS**

**October 2020  
INMATE CENSUS SNAPSHOT**

**BUCKS COUNTY CORRECTIONAL FACILITY**

<b>Female Inmates</b>		<b>115</b>
<b>Male Inmates</b>		<b>600</b>
<b>Inmates in other Institutions/Habeas</b>		<b>32</b>
<i>7x Other County or SCI</i>	<i>1</i>	
<i>Hospital</i>	<i>2</i>	
<i>Kintock Group</i>	<i>0</i>	
<i>Montgomery County</i>	<i>0</i>	
<i>Norristown State Hospital</i>	<i>28</i>	
<i>Treatment Prgm</i>	<i>0</i>	
<i>Furlough</i>	<i>0</i>	
<i>U.S. Marshal's Service</i>	<i>0</i>	
<i>Other</i>	<i>1</i>	
	<b>Total</b>	<b>747</b>

**COMMUNITY CORRECTIONS CENTERS**

Male Residents - Minimum Custody	35
Male Residents - Medium Custody	30
Female Residents – Minimum Custody	0
<b>Total</b>	<b>65</b>

House Arrest	66
Weekenders	0
48 Hour DUI	0
72 Hour DUI	0
<b>Total</b>	<b>66</b>

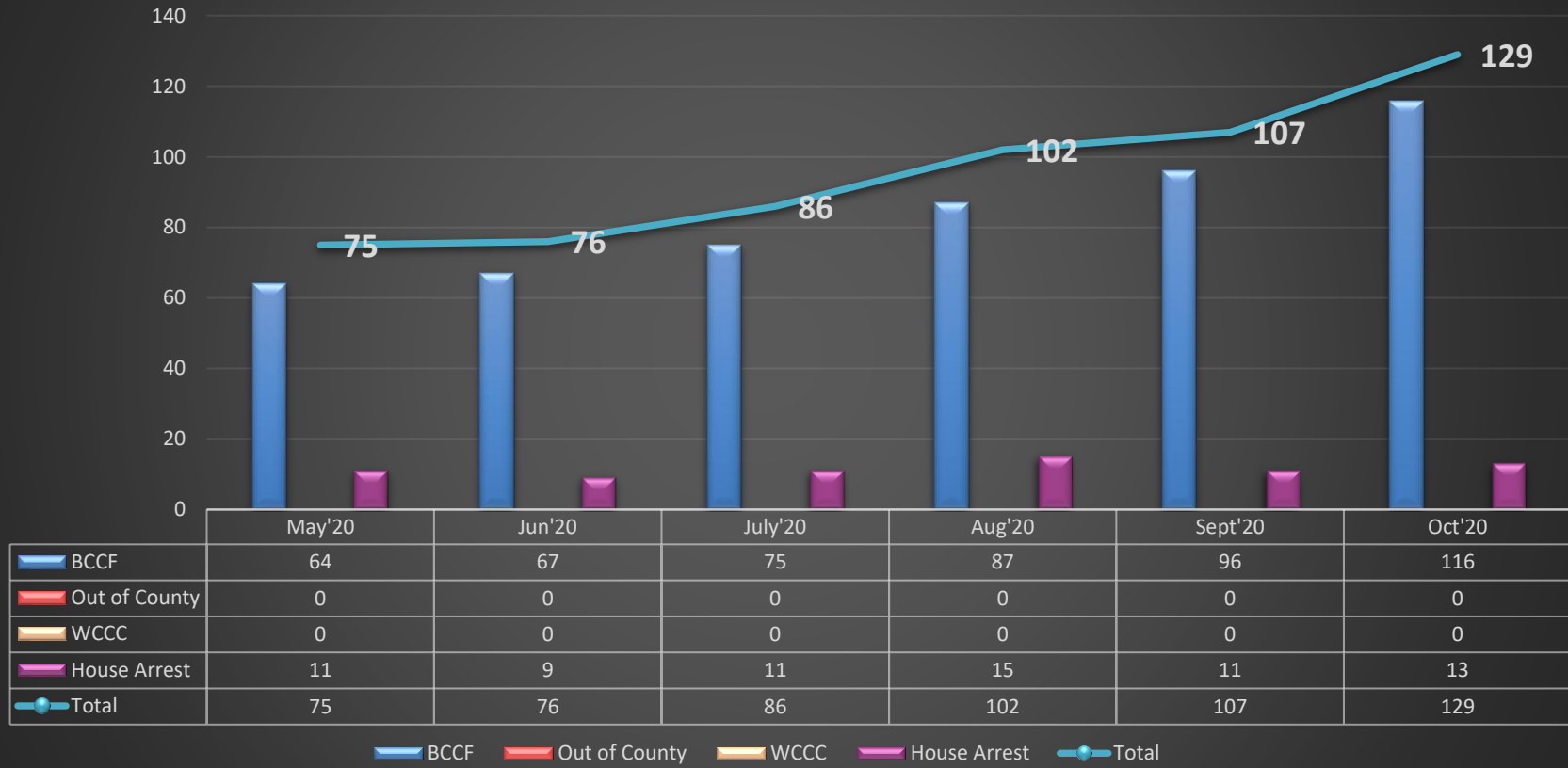
**Grand Total 878**

**HISTORICAL AVERAGE  
POPULATION TRENDS  
2017-2020**

MONTH	Correctional Facility						Community Corrections				House Arrest	
	2017	2018	2019		2020		2017	2018	2019	2020	2019	2020
			BCCF In- House	Housed Elsewhere	BCCF In- House	Housed Elsewhere						
JAN	908/*98	807/*175	804	106	723	72	241	191	235	210	82	63
FEB	930/*79	809/*198	789	107	712	70	234	191	251	210	82	68
MAR	959/*87	788/*222	782	98	699	56	230	198	255	189	72	65
APR	957/*95	793/*199	777	89	540	42	245	179	243	126	76	61
MAY	990/*132	802/*224	761	87	468	41	240	178	236	80	72	46
JUN	1016/*168	812/*213	739	73	491	41	226	186	230	58	78	41
JUL	1043/*193	836/*143	732	76	551	42	239	189	225	53	80	53
AUG	1058/*195	852/*128	803	75	613	45	228	193	204	54	80	64
SEP	1065/*194	845/*108	756	82	657	45	211	206	209	57	80	70
OCT	1058/*184	815/*87	760	84	718	47	230	257	226	64	81	67
NOV	1040/*175	803/*72	753	88			204	232	218		78	
DEC	991/*158	809/*99	735	77			197	243	220		67	
<b>Yrly ADP</b>	<b>1030/*147</b>	<b>814/*156</b>	<b>766</b>	<b>87</b>	<b>617</b>	<b>50</b>	<b>227</b>	<b>204</b>	<b>229</b>	<b>110</b>	<b>77</b>	<b>60</b>

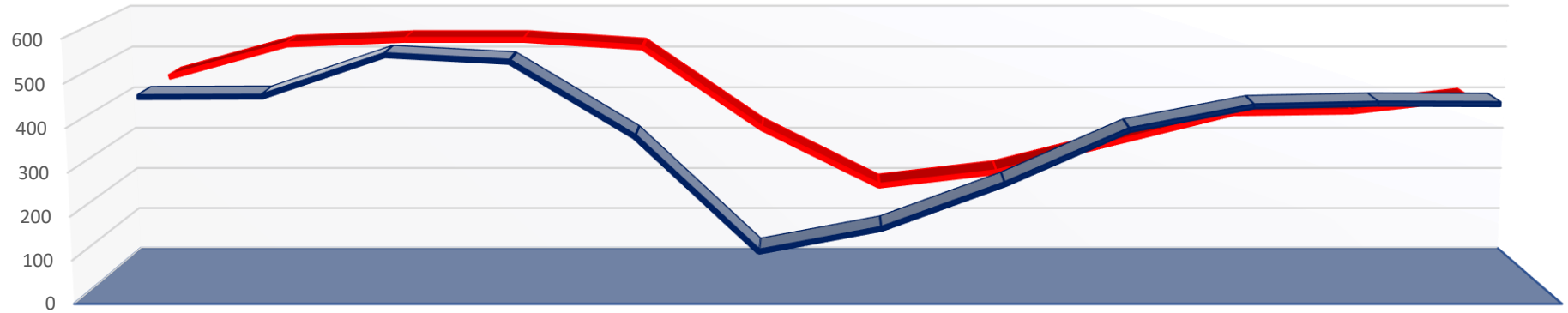
\*Included in monthly ADP total

## Average Monthly Female Population Trends



# Commitment Summary

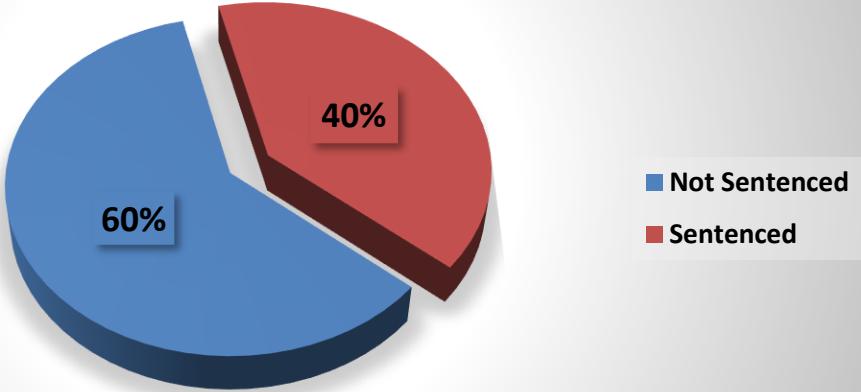
## Committed vs. Discharged



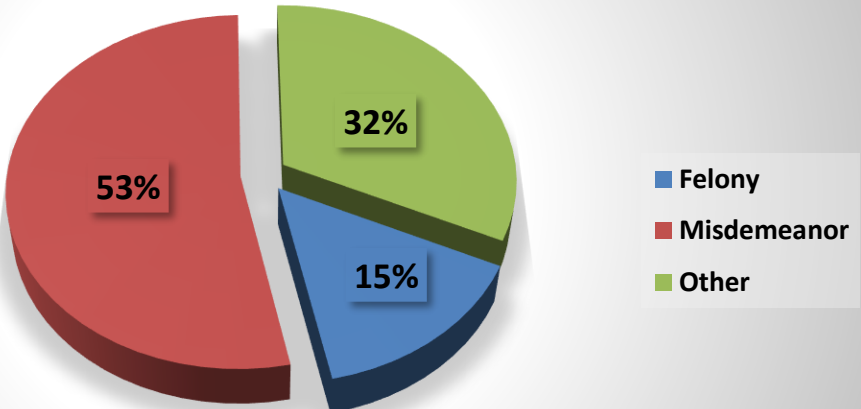
	Nov'19	Dec '19	Jan '20	Feb '20	March '20	Apr'20	May'20	June'20	July'20	Aug'20	Sept.'20	Oct'20
■ Committed	456	457	551	536	366	101	154	257	381	435	441	440
■ Discharged	457	534	545	545	527	335	196	229	300	370	374	406

■ Committed ■ Discharged

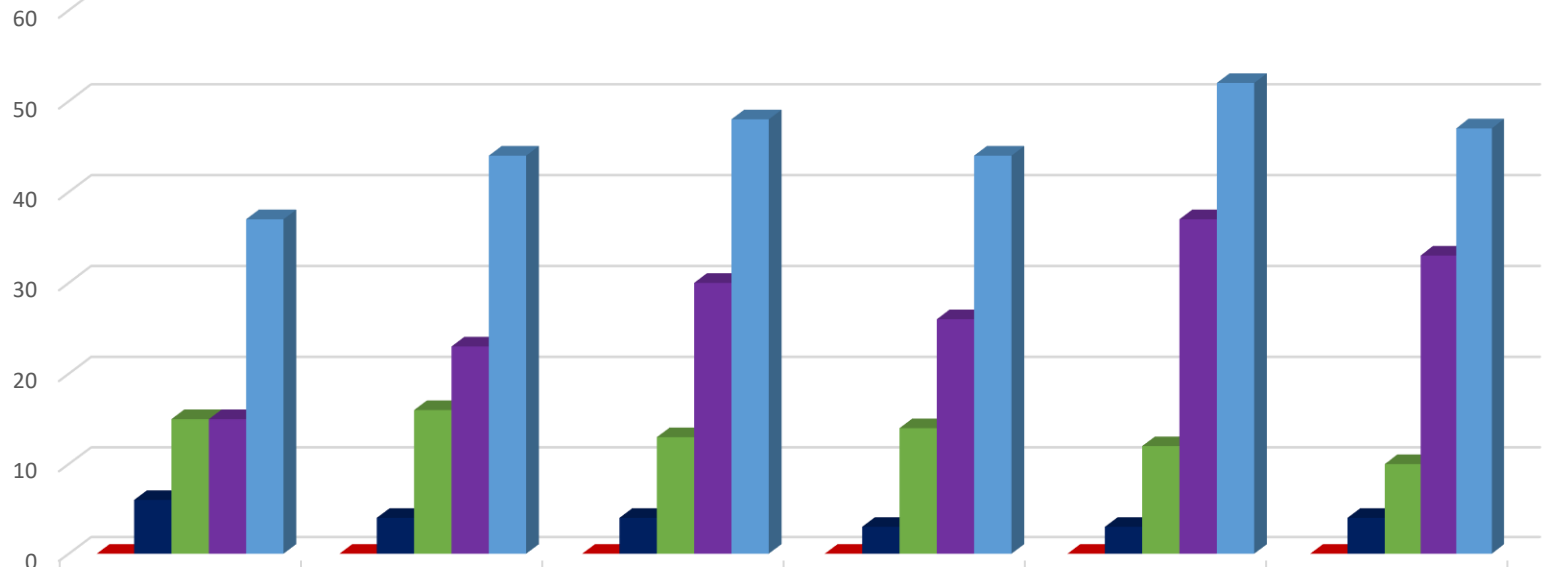
### Inmates By Charge Status October 2020



### Inmates By Primary Offense October 2020



## Prisoners by Location Serving Over 2 Yr. Sentences



	May'20	JUNE'20	JULY'20	AUG'20	SEPT'20	OCT'20
■ Walk Away/Escape	0	0	0	0	0	0
■ CCC	6	4	4	3	3	4
■ House Arrest	15	16	13	14	12	10
■ BCCF	15	23	30	26	37	33
■ Total	37	44	48	44	52	47

■ Walk Away/Escape  
 ■ CCC  
 ■ House Arrest  
 ■ BCCF  
 ■ Total



## **DRUG AND ALCOHOL SERVICES**

The following statistics represent the core activities of the Drug and Alcohol Treatment Section

	<b>September</b>	<b>October</b>
Number of referrals	<b>250</b>	<b>248</b>
Number of offenders screened/received services	<b>107</b>	<b>108</b>
Number of assessments completed	<b>78</b>	<b>80</b>
Court-Ordered D & A Assessments	<b>41</b>	<b>34</b>
Court-Ordered D & A Evaluations completed	<b>10</b>	<b>16</b>
Number of CRN evaluations completed by Council of SEPA	<b>0</b>	<b>0</b>
Number of offenders in group/Offenders on waiting list for group	<b>12/59</b>	<b>20/61</b>
Number of groups/1:1's facilitated	<b>4/5</b>	<b>27/29</b>
<b><u>Referrals/Placement</u></b>		
Highway Safety Classes/Multiple Offenders Program	<b>0</b>	<b>0</b>
Outpatient treatment	<b>24</b>	<b>33</b>
Residential treatment	<b>17</b>	<b>12</b>
Recovery house	<b>6</b>	<b>11</b>
Sentenced offenders in community-based programming	<b>0</b>	<b>0</b>
Identified Veterans	<b>1</b>	<b>0</b>
COMPASS Applications	<b>20</b>	<b>8</b>
<b><u>Vivitrol:</u></b>		
Received medication:	2 (1 male; 1 female)	3 (3 females)
Location:	MC3 – 1 GPOP – 1 (female)	HEART – 1 GPOP-2 (females)
Bloodwork refused:	<b>0</b>	<b>0</b>
<b><u>Subutex:</u></b>		
Total number of inmates treated:	<b>52</b> (35 males; 17 females)	<b>63</b> (37 males; 26 females)
Total number of inmates discontinued:	<b>22</b> (14 males; 8 females)	<b>22</b> (12 males; 10 females)
Released:	<b>11</b> (8 males; 3 females)	<b>16</b> (8 males; 8 females)
Tapers Only:	<b>12</b> (6 males; 6 females)	<b>6</b> (4 males; 2 females)
Diversion:	<b>0</b>	<b>0</b>
<b><u>Narcan:</u></b>		
Received Upon Release:	<b>1 male</b>	<b>4 males</b>

**RECOVERY UNITS – OCTOBER 2020**

	<b>HOPE</b>	<b>HEART</b>
Total Number of Residents	<b>18</b>	<b>3</b>
Average Daily Number of Residents Participating	<b>14.6</b>	<b>2</b>
<b>Admissions:</b>	<b>4</b>	<b>0</b>
<b>Discharges:</b>	<b>4</b>	<b>2</b>
Parole/Maximum	<b>3</b>	<b>1</b>
Misconduct	<b>0</b>	<b>0</b>
Discharge by Staff	<b>0</b>	<b>1</b>
Medical	<b>0</b>	<b>0</b>
Habeas	<b>0</b>	<b>0</b>
Self-Request to General Population	<b>1</b>	<b>0</b>
Self-Request to MC3/WC3	<b>0</b>	<b>0</b>
Bail	<b>0</b>	<b>0</b>
TOT State Facility	<b>0</b>	<b>0</b>
Discharged Graduates	<b>0</b>	<b>0</b>
<b>Paroled:</b>		
Home	<b>2</b>	<b>1</b>
Residential Treatment	<b>1</b>	<b>0</b>
Recovery House	<b>0</b>	<b>0</b>
TOT Other County/PA or NJ	<b>0</b>	<b>0</b>

**PRIMECARE – CORRECTIONAL MENTAL HEALTH SERVICES:**

	<b>September</b>	<b>October</b>
Current Census		
Current Census	<b>686</b>	<b>718</b>
Intake Referral Received	<b>162</b>	<b>255</b>
Intake Assessments Completed	<b>230</b>	<b>258</b>
Inmate Request Form Referrals Received	<b>288</b>	<b>326</b>
Inmates Seen by Psychologist/Psychologist Rounds	<b>546</b>	<b>560</b>
Inmates Seen by LCSW	<b>883</b>	<b>1,031</b>
Inmates Prescribed Psychotropic Medications	<b>285</b>	<b>302</b>
Involuntary Medication/304 Commitment	<b>0</b>	<b>0</b>
Inmates Enrolled In Group Counseling – Male/Female	<b>5 males/0 females</b>	<b>17 males/0 females</b>
Inmates on SPMI	<b>69</b>	<b>76</b>
Community Treatment Arrangements	<b>14</b>	<b>6</b>
Psychiatric Hospitalizations-302 commitment	<b>0</b>	<b>0</b>
Psychiatric Hospitalizations-303 commitment	<b>0</b>	<b>0</b>
Psychiatric Hospitalizations-304 commitment	<b>0</b>	<b>1</b>
Psychiatric Hospitalizations-402 commitment for NSH wait list	<b>2</b>	<b>2</b>
Dr. Cassidy Court Ordered Evaluations	<b>4</b>	<b>0</b>
Dr. Markey Competency Evaluations	<b>4</b>	<b>5</b>
Court Ordered Mental Health Assessments	<b>98</b>	<b>154</b>
Referral to VA	<b>0</b>	<b>3</b>
911 Alerts	<b>4</b>	<b>9</b>

\*\* The 911 Suicide Hotline has experienced nine (9) calls in the month of October totaling 57 calls year to date.

**PRISONER HEALTHCARE – PrimeCare: 2020**

<b>YEAR: 2020</b>	<b>JAN</b>	<b>FEB</b>	<b>MAR</b>	<b>APR</b>	<b>MAY</b>	<b>JUN</b>	<b>JUL</b>	<b>AUG</b>	<b>SEP</b>	<b>OCT</b>	<b>NOV</b>	<b>DEC</b>
<b>Intake Screens</b>	525	505	356	97	143	231	325	404	394	411		
<b>Nurse Sick Call</b>	311	289	316	233	197	199	215	313	259	301		
<b>Provider Physicals</b>	227	227	186	49	98	130	182	190	231	210		
<b>Provider Sick Call</b>	628	545	629	1023	569	431	542	616	586	622		
<b>Provider Chronic Clinic</b>	147	123	110	68	71	88	125	118	147	124		
<b>TB Testing - PPD Planted</b>	611	517	349	110	117	182	249	452	488	250		
<b>TB Testing - Positives</b>	8	7	10	2	6	5	4	4	1	9		
<b>Chest X-Rays</b>	24	8	10	2	6	6	6	10	6	13		
<b>TB Treatment</b>	0	0	0	0	0	0	0	0	0	0		
<b>Syphilis (RPR) Testing</b>	52	61	29	15	44	90	113	21	124	109		
<b>HIV Testing</b>	53	69	32	15	48	99	117	132	128	116		
<b>New Diagnosis HIV Positive</b>	0	0	0	0	0	0	1	0	0	0		
<b>Known HIV Positive Patients</b>	13	13	15	9	10	8	10	13	11	15		
<b>Chlamydia and Gonorrhea Testing</b>	441	458	320	82	115	216	289	339	360	359		
<b>Chlamydia +</b>	8	6	11	1	3	4	11	11	8	13		
<b>Gonorrhea +</b>	4	3	3	1	0	2	2	3	2	12		
<b>Total STD Treatment</b>	5	6	6	2	2	4	3	7	3	15		
<b>Total Reportable Comm. Diseases</b>	13	9	14	2	4	6	16	15	10	27		
<b>Medical Isolation</b>	10	7	5	237	187	105	346	425	381	421		
<b>Positive MRSA Infections</b>	3	1	1	0	1	2	1	5	1	3		
<b>Facility Acquired MRSA Infections</b>	1	0	1	0	1	0	1	3	0	1		
<b>Hepatitis A Vaccinations</b>	19	12	12	1	3	3	5	4	0	0		
<b>Total Vaccinations</b>	28	37	25	2	4	3	5	4	0	0		
<b>Optometrist Clinic</b>	0	10	0	0	0	0	6	0	7	0		
<b>Pregnant Patients</b>	8	7	6	1	2	4	4	5	3	5		
<b>OB/GYN - On Site</b>	15	20	12	4	0	3	4	5	13	9		
<b>OB/GYN - Off Site</b>	0	1	1	0	0	0	1	0	0	0		
<b>Dental Clinic</b>	160	162	161	63	146	102	125	134	118	144		
<b>Outside Physician Consults</b>	20	47	44	3	2	7	11	13	23	31		
<b>X-Ray/ Imaging Services</b>	55	37	34	9	14	23	22	38	30	38		
<b>ER Visits</b>	13	11	12	7	11	9	12	21	10	14		
<b>ER Visits Via Ambulance</b>	5	3	5	2	5	2	9	9	1	9		
<b>Hospital Admissions</b>	7	6	5	1	7	4	8	9	3	6		
<b>Deaths</b>	0	0	0	0	0	0	0	0	0	0		
<b>Total Number of Admissions</b>	551	536	366	101	154	257	381	435	430	440		
<b>Average Daily Population - BCCF</b>	794	780	754	581	508	531	592	613	701	717		
<b>Average Daily Population - M/WCCC</b>	210	209	189	126	79	58	52	54	57	64		
<b>Total Population</b>	1004	989	943	707	587	589	644	667	760	781		

\*\*Note: red border denotes numbers revised from previously submitted

## CORRECTIONS TRAINING ACADEMY October 2020

<b>Course Type</b>	
Mandatory In-Service	0.0
Basic Training	1882.0
Other	57.0
<b>Total</b>	<b>1939.0</b>

## TOURS, RECOGNITIONS AND OFFICIAL VISITS TO THE DEPARTMENT OF CORRECTIONS

There were zero (0) tours of the Correctional Facilities in the month of October.

## ASSAULT/MISCONDUCTS

There was six (6) offender on offender and four (4) offender on staff assaults/misconducts in October 2020. There were zero (0) injury sustained requiring attention beyond basic first aid.

## PROJECTS UPDATE October 2020

### **BCCF:**

As per the Project Manager, 69% of the project is completed. Current work activities progressing through the month of October shows- **9-day impact** to the schedule completion date.

Mechanical, electrical, and plumbing work continues. 98% of the perimeter fencing is completed. Roof work continues.

Additional laundry equipment has been secured for the expansion.

**Projected Substantial Completion Date: June 17, 2021.**

**DEPARTMENT OF CORRECTIONS**

**SEPTEMBER 2020**

**OUT OF COUNTY PRISON HOUSING COSTS**

<b>MONTH</b>	<b>2016</b>	<b>2017</b>	<b>2018</b>	<b>2019</b>	<b>2020</b>
January	\$59,550	\$145,011	\$298,727	\$166,290	\$47,185
February	\$71,025	\$160,771	\$325,283	\$149,090	\$43,250
March	\$67,875	\$190,084	\$398,594	\$126,870	\$26,050
April	\$69,450	\$201,123	\$339,626	\$97,630	\$1,500
May	\$79,125	\$286,104	\$408,234	\$99,655	\$0
June	\$79,725	\$356,337	\$366,754	\$67,260	\$0
July	\$63,825	\$424,107	\$232,715	\$63,925	\$0
August	\$71,504	\$434,738	\$202,330	\$60,850	\$0
September	\$131,594	\$424,735	\$146,453	\$75,725	\$0
October	\$154,713	\$404,785	\$112,442	\$75,210	\$0
November	\$147,383	\$404,286	\$75,940	\$78,955	
December	\$144,870	\$345,662	\$144,640	\$55,660	
<b>Total:</b>	<b>\$1,140,639</b>	<b>\$3,777,743</b>	<b>\$3,051,738</b>	<b>\$1,117,120</b>	<b>\$117,985</b>

**TREATMENT PROGRAM SERVICES**

**Activities and Services Provided**

	<b>September</b>	<b>October</b>
ABE/GED Female Class	<b>currently suspended</b>	<b>currently suspended</b>
ABE/GED Male Class	<b>currently suspended</b>	<b>currently suspended</b>
Anger Management	<b>currently suspended</b>	<b>6 males</b>
Child Services Visits	<b>currently suspended</b>	<b>currently suspended</b>
Computer Assisted Learning/Literacy Program	<b>currently suspended</b>	<b>currently suspended</b>
Decisions Group	<b>currently suspended</b>	<b>currently suspended</b>
Domestic Relations	<b>currently suspended</b>	<b>currently suspended</b>
Intake Classifications	<b>430 completed</b>	<b>440 completed</b>
Life Abundant/Women	<b>currently suspended</b>	<b>currently suspended</b>
Life Abundant/Men	<b>currently suspended</b>	<b>currently suspended</b>
Moving Forward	<b>currently suspended</b>	<b>currently suspended</b>
OLMC Mentoring	<b>currently suspended</b>	<b>currently suspended</b>
Religious Services	<b>currently suspended</b>	<b>currently suspended</b>
School Age Youth	<b>11 males BCCF</b>	<b>8 males BCCF (5 IEP)</b>
STOP	<b>currently suspended</b>	<b>5 inmates</b>

## Section # 2 CORRECTIONAL FACILITY

### October JPC Meeting:

BCCF's JPC Meeting was held on 10/19/2020 at 0900 hours with seven inmate representatives in attendance. Discussion of this month's meeting included the following topics: tablet/phone issues, requests for comfort kits, and laundry issues. Previous concerns are still pending are shower mats, increase in institutional job pay and commissary/tablet requests.

### LIBRARY USAGE 2020

#### General Library

	Jan	Feb	Mar	Apr	May	Jun	July	Aug	Sept	Oct	YTD
Men	1001	911	736	0	0	0	0	0	0	69	2717
Women	226	172	174	0	0	0	0	0	0	34	606
Inmate Workers	37	37	25	0	0	0	0	0	0	0	99
<b>Total</b>	<b>1264</b>	<b>1120</b>	<b>935</b>	<b>0</b>	<b>0</b>	<b>0</b>	<b>0</b>	<b>0</b>	<b>0</b>	<b>103</b>	<b>3422</b>

#### Law Library

	Jan	Feb	Mar	Apr	May	Jun	July	Aug	Sept	Oct	YTD
Men	281	313	268	53	27	68	83	83	68	95	1339
Women	37	58	33	0	0	3	0	2	3	1	137
RHU	15	5	9	2	3	24	2	2	2	5	69
MHU	2	4	0	6	0	0	0	1	3	3	19
<b>Total</b>	<b>335</b>	<b>380</b>	<b>310</b>	<b>61</b>	<b>30</b>	<b>95</b>	<b>85</b>	<b>88</b>	<b>76</b>	<b>104</b>	<b>1564</b>

#### Circulation

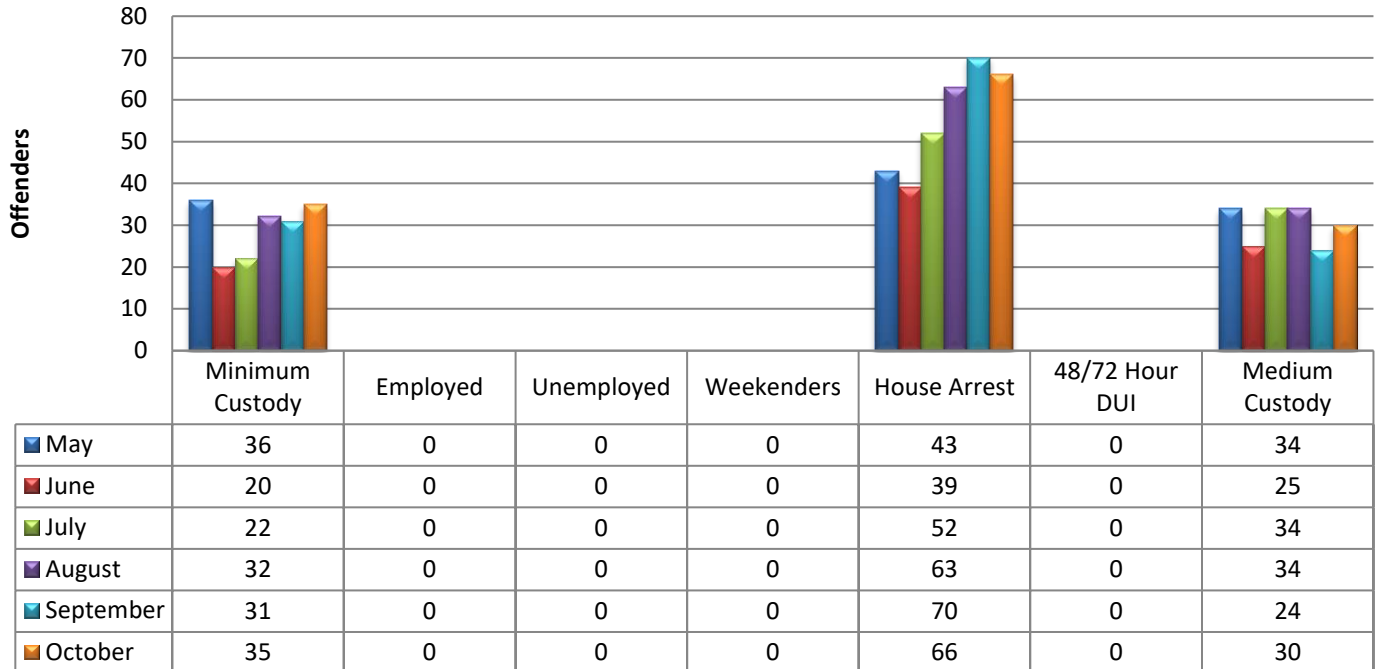
General	Total
216	216

#### Inter-Library Loan

Requests Sent	0
Requests Received	0

## Section # 3 COMMUNITY CORRECTIONS

### Population Supervised by Community Corrections



## COMMUNITY CORRECTIONS EMPLOYMENT

	September	October
Resident New Job Starts	0	0
New Admissions – MCCC/WCCC	15	31
Releases/Transfers	29	18
Un-sentenced	0	0
Weekenders	0	0
48 Hour DUI's	0	0
72 Hour DUI's	0	0
Minimum Custody- Men	31	35
Minimum Custody- Women	0	0
Medium Custody- Men	24	30
House Arrest	70	66
<b>Last Day of the Month:</b>		
MCCC	55	65
WCCC	0	0

## WORK RELEASE STATUS

	2016	2017	2018	2019	2020	
					October	YTD
Net Inmate Wages	\$861,210	\$848,427	\$738,517	\$727,711	\$361	\$96,884
Court Costs, Fines & Restitution	\$170,595	\$171,237	\$145,084	\$139,742	\$0	\$16,489
Van - shuttle to/from work	\$12,884	\$8,864	\$4,950	\$5,394	\$0	\$768
Board Paid to County (Revenue)	\$267,858	\$258,652	\$223,907	\$223,098	\$361	\$31,138

## **PER DIEM CONFINEMENT REVENUE**

	2016	2017	2018	2019	2020	
					October	YTD
DUI and Weekender Programs	\$2,254	\$1,735	\$1,390	\$799	\$0	\$264
House Arrest	\$586,109	\$550,994	\$555,436	\$419,885	\$30,119	\$261,105

<b>October Work Release</b>		
Employment Categories	Male Residents	Female Residents
Landscaping	0	0
Building/Trades/Manufacturing/Labor	0	0
Restaurant/Retail	0	0
Professional	0	0
<b>Subtotal</b>	<b>0</b>	<b>0</b>
<b>TOTAL</b>	<b>0</b>	<b>0</b>

As of October 31, 2020, there were thirty-five (35) male residents classified as minimum custody and housed at the Men's Community Corrections Center. Due to the COVID 19 all work release, community service and transfers were suspended.

As of October 31, 2020, there were zero (0) females residents housed at the Women's Community Corrections Center. (Note: In April, due to COVID-19 the nine (9) female offenders at the Women's Center were transferred to BCCF for staffing / housing purposes.)



**INSTITUTIONAL EMPLOYMENT & COMMUNITY SERVICE PERFORMED FOR  
OCTOBER 2020**

<b><u>INSTITUTIONAL</u></b>			
<b><u>Site</u></b>	<b><u># of Residents</u></b>		<b><u># of hours worked</u></b>
Kitchen (MCCC)	15		2108
Bakery (MCCC)	6		644
Garden (MCCC)	4		264
Sanitation (MCCC)	15		3488
Lobby (BCCF)	8		512
Aramark Crew (MCCC)	4		343
Aramark Crew (CCC and Special Projects)	12		581
<b>TOTALS:</b>	<b>64</b>		<b>7,940</b>
<b><u>COMMUNITY</u></b>			
<b>*Community Service suspended as of 3/13/20*</b>			
Fairless Hills Fire Company	0		0
Lenape Valley	0		0
Pennsbury Manor	0		0
VFW Post 6493	0		0
Washington Crossing Park	0		0
<b>TOTALS:</b>	<b>0</b>		<b>0</b>

<b>Community Service Year to Date</b>	<b>YTD- Hours</b>
Fairless Hills Fire Company	192
Lenape Valley Foundation	336
Pennsbury Manor	232
VFW Post 6493	174
Washington Crossing Park	264
<b>TOTALS</b>	<b>1,198</b>

**Walk-away activity for the month October 2020:**

**Walk-away/Escapes:           0**

**Apprehensions>Returns:    0**

## **Program Services**

### **Case Conference**

There was one (1) case conference during the month of October.

### **Education**

Education Programming remained suspended during the month of October due to COVID-19.

### **Community Service**

Please note: Community Service details remained suspended during October due to COVID-19.

### **Institutional Jobs**

There were 64 offenders that completed 7,940 hours in institutional jobs in October.

### **Weekenders**

There were zero (0) weekenders in the month of October.

### **VITA Decisions**

Please note: Outside Programming remained suspended during the month of October due to COVID-19.

### **Furloughs**

There were zero (0) court ordered furloughs for the month of October.

### **House Arrest**

During the month of October there were 38 offenders placed on house arrest.

## **Community Corrections Joint Participation Council (JPC) meetings**

On October 15, 2020, a Minimum Custody JPC was held at 1:00 pm with one (1) offender attending the meeting. The following items were mentioned at the meeting: Inquiry into the Work Release program resuming (status: unknown at this time – pending approval as well as proper COVID restrictions in place) and request for vending machine for other areas of the Men's Center (Status: Pending – new vending machines will be coming to the Men's Center in the near future). The following issues were raised during the last JPC meeting in September: request for movies to be played on the televisions during the weekend (status: not applicable – Men's Center is not equipped or wired for this function), requested different vending options (Status: Pending – new vending machines in the near future), and request for programs / educational courses (status: One in-house program resumed with proper COVID restrictions in place and in the process of examining other options for programming within proper COVID restrictions).

On October 15, 2020, a Medium Custody JPC was held at 2:00pm with three (3) offenders attending the meeting. The following items were mentioned at the meeting: request for hand sanitizer in the bathroom of dorms (Status: Pending – hand sanitizers will be placed in the hallways of common areas), report of dorm urinal leaking in Golf Dorm (Status: Completed and fixed on October 23, 2020) and repeat request of resuming haircuts on the dorms (Status: In process / pending final approval). The following issues were raised during the last JPC meeting in August: the request to resume barbering (Status: In process / pending final approval).

## GARDEN CHART



ITEM	JAN	FEB	MAR	APR	MAY	JUNE	JULY	AUG	SEP	OCT	NOV	DEC	Total
Lettuce (lbs)													0
Eggplant (lbs)							35	150	82	68			335
Cucumber (lbs)						28	806	223	40				1097
Tomatoes (lbs)							205	2534	492	341			3572
Sweet & Hot Peppers (lbs)							49	201	97	99			446
Green Peppers (lbs)							116	143	105	108			472
Kale (lbs)						166	207	149	111	57			690
Swiss Chard (lbs)						187	166	142	130	116			741
Squash (lbs)							57	110	43	11			221
Melons (lbs)							59	341	145				545
Spinach (lbs)													0
Zucchini (lbs)						152	1524	151					1827
Cherry Grape Tomatoes (lbs)							48	212	146	88			494
Green Beans (lbs)													0
Dill					3	10	4	1					18
Garlic (lbs)						4	56						60
Thyme (lbs)						3	3	4	2	3			15
Rosemary (lbs)					1	6	11	9	4	4			35
Chives (lbs)					7	11	12	11	5	8			54
Cilantro (lbs)					3	10	7	3					23
Basil (lbs)						9	14	7	2				32
Parsley (lbs)													0
Sage (lbs)						4	9	8	3	1			25
Oregano (lbs)						6	8	10	6	7			37
Asparagus (lbs)					16	22	4						42
Arugula (lbs)					2	38	51	56		24			171
Broccoli										17			17
Cauliflower										22			22
<b>Total Produce</b>					<b>32</b>	<b>656</b>	<b>3451</b>	<b>4465</b>	<b>1413</b>	<b>974</b>			<b>10991</b>
<b>Total Compost (lbs)</b>	<b>926</b>	<b>1198</b>	<b>1118</b>	<b>941</b>	<b>886</b>	<b>799</b>	<b>1088</b>	<b>1234</b>	<b>1118</b>	<b>1369</b>			<b>10677</b>