



BUCKS COUNTY PRISON OVERSIGHT BOARD REPORT



The Prison Oversight Board Report for August 2020 is submitted herein.

Prison Oversight Board Members

Commissioner Robert J. Harvie, Jr., Chair

Neale Dougherty, Controller, Secretary

Commissioner Diane M. Ellis-Marseglia, LCSW, Vice Chair

Commissioner Gene DiGirolamo

Hon. Wallace H. Bateman, President Judge

Matthew D. Weintraub, District Attorney

Milton Warrell, Sheriff

Christine A. Shenk, Chief, Adult Probation and Parole

Ann Russavage-Faust, Public Defender

Karen Dopson, Citizen Board Member

Daniel H. Grace, Citizen Board Member

Sara Webster, Esq., Citizen Board Member

PRISON OVERSIGHT BOARD REPORT INDEX

Section 1.	DEPARTMENT of CORRECTIONS	Page
	Inmate Census	1.
	Average Historical Population Trends	2.
	Average Monthly Female Population Trends	3.
	Commitments vs. Discharges Statistic and Graph	4.
	Commitment Summary Statistic and Graphs	5.
	Prisoners by Locations Serving Over 2 yrs. Sentence	6.
	Drug and Alcohol Report	7, 8.
	Correctional Mental Health Report	8.
	Training Academy Report	8.
	Tours, Recognitions & Official Visits	9.
	Misconducts	9.
	Project(s) Information	9.
	Garden Chart	10.
	Business Office	11.
	Prisoner Health Care	12.
Section 2.	CORRECTIONAL FACILITY	
	BCCF Population Breakdown Graph	13.
	Inmate Services Report	13.
	Library Usage Report	14.
Section 3.	COMMUNITY CORRECTIONS	
	Monthly Census	15.
	Supervision Groups Graphed Monthly Trends	15.
	Work Release Status Report	16.
	Walk Away Report	16.
	Program Services	16.
	Community Services Report	17.

Section #1. DEPARTMENT OF CORRECTIONS

**August 2020
INMATE CENSUS SNAPSHOT**

BUCKS COUNTY CORRECTIONAL FACILITY

Female Inmates		93
Male Inmates		530
Inmates in other Institutions/Habeas		31
<i>7x Other County or SCI</i>	2	
<i>Hospital</i>	2	
<i>Kintock Group</i>	0	
<i>Montgomery County</i>	0	
<i>Norristown State Hospital</i>	23	
<i>Treatment Prgm</i>	0	
<i>Furlough</i>	0	
<i>U.S. Marshal's Service</i>	1	
<i>Other</i>	3	
	Total	654

COMMUNITY CORRECTIONS CENTERS

Male Residents - Minimum Custody	32
Male Residents - Medium Custody	34
Female Residents – Minimum Custody	0
Total	66

House Arrest	63
Weekenders	0
48 Hour DUI	0
72 Hour DUI	0
Total	63

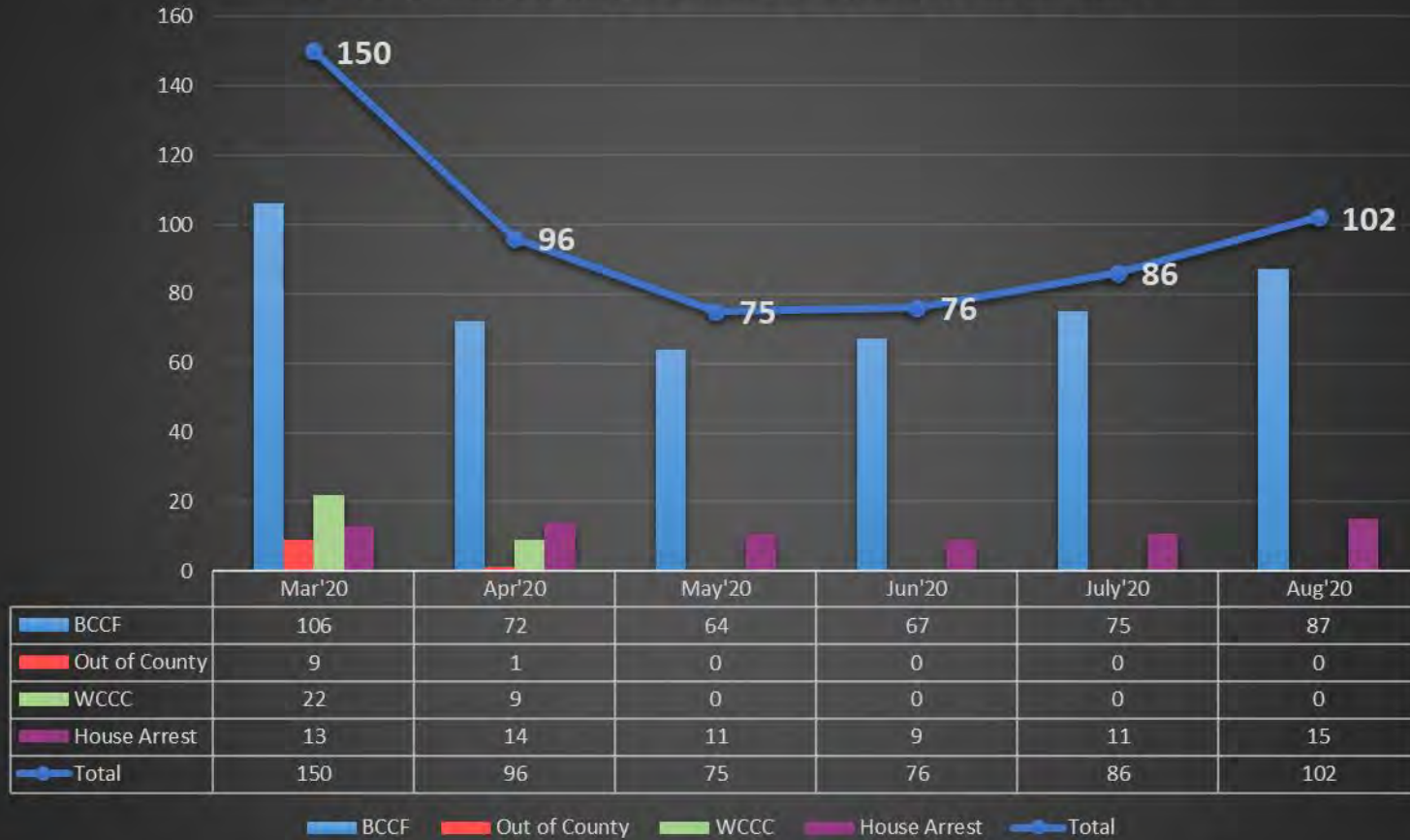
Grand Total 783

**HISTORICAL AVERAGE
POPULATION TRENDS
2017-2020**

MONTH	Correctional Facility						Community Corrections				House Arrest	
	2017	2018	2019		2020		2017	2018	2019	2020	2019	2020
			BCCF In- House	Housed Elsewher	BCCF In- House	Housed Elsewher						
JAN	908/*98	807/*175	804	106	723	72	241	191	235	210	82	63
FEB	930/*79	809/*198	789	107	712	70	234	191	251	210	82	68
MAR	959/*87	788/*222	782	98	699	56	230	198	255	189	72	65
APR	957/*95	793/*199	777	89	540	42	245	179	243	126	76	61
MAY	990/*132	802/*224	761	87	468	41	240	178	236	80	72	46
JUN	1016/*168	812/*213	739	73	491	41	226	186	230	58	78	41
JUL	1043/*193	836/*143	732	76	551	42	239	189	225	53	80	53
AUG	1058/*195	852/*128	803	75	613	45	228	193	204	54	80	64
SEP	1065/*194	845/*108	756	82			211	206	209		80	
OCT	1058/*184	815/*87	760	84			230	257	226		81	
NOV	1040/*175	803/*72	753	88			204	232	218		78	
DEC	991/*158	809/*99	735	77			197	243	220		67	
Yrly ADP	1030/*147	814/*156	766	87	600	51	227	204	229	123	77	58

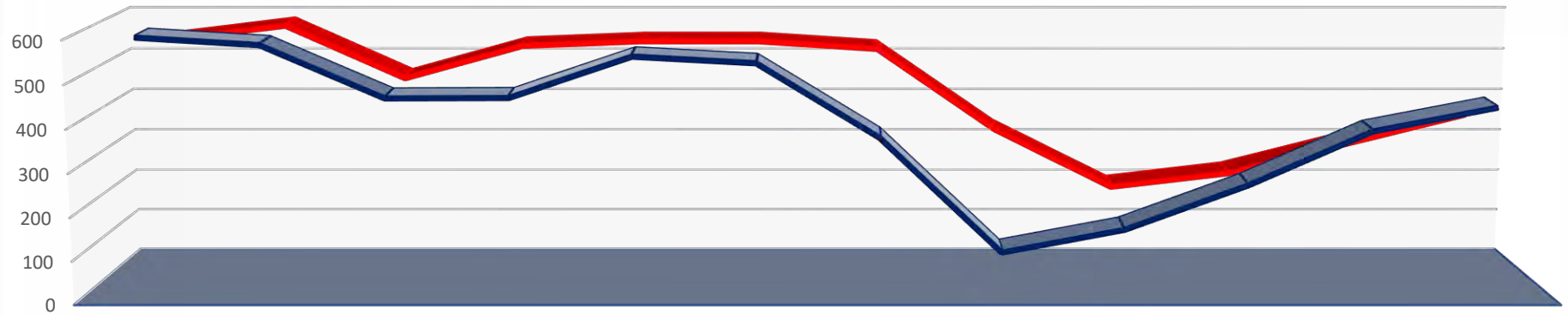
*Included in monthly ADP total

Average Monthly Female Population Trends



Commitment Summary

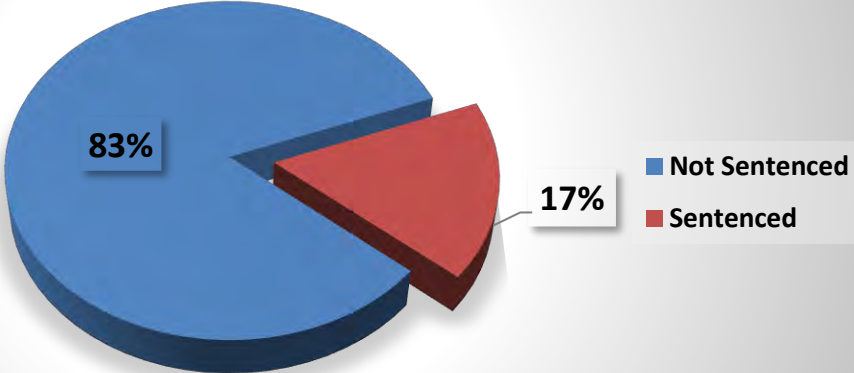
Committed vs. Discharged



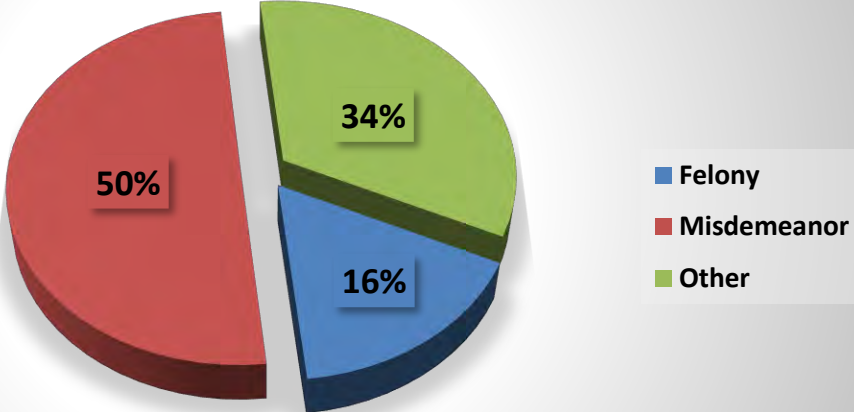
	Sept '19	Oct'19	Nov'19	Dec '19	Jan '20	Feb '20	March '20	Apr'20	May'20	June'20	July'20	Aug'20
■ Committed	594	577	456	457	551	536	366	101	154	257	381	435
■ Discharged	548	582	457	534	545	545	527	335	196	229	300	370

■ Committed ■ Discharged

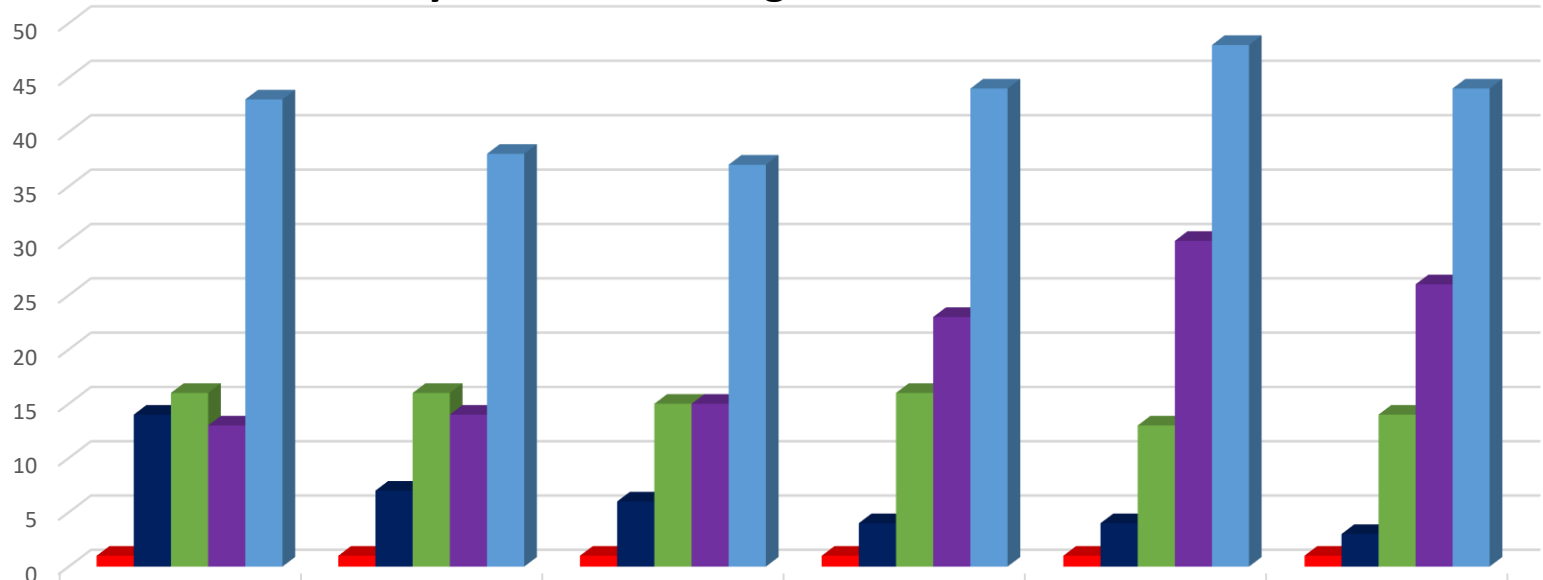
Inmates By Charge Status August 2020



Inmates By Primary Offense August 2020



Prisoners by Location Serving Over 2 Yr. Sentences



	MAR'20	APR'20	May'20	JUNE'20	JULY'20	AUG'20
Walk Away/Escape	1	1	1	1	1	1
CCC	14	7	6	4	4	3
House Arrest	16	16	15	16	13	14
BCCF	13	14	15	23	30	26
Total	43	38	37	44	48	44

■ Walk Away/Escape
 ■ CCC
 ■ House Arrest
 ■ BCCF
 ■ Total

DRUG AND ALCOHOL SERVICES

The following statistics represent the core activities of the Drug and Alcohol Treatment Section for **August 2020**

Number of referrals		198
Number of offenders screened/received services		106
Number of assessments completed		88
Court-Ordered D & A Assessments		46
Court-Ordered D & A Evaluations completed		18
Number of CRN evaluations completed by Council of SEPA		0
Number of offenders in group		54
Number of groups/1:1's facilitated		0/0
<u>Referrals/Placement</u>		
Highway Safety Classes/Multiple Offenders Program		0
Outpatient treatment		51
Residential treatment		7
Recovery house		13
Sentenced offenders in community-based programming		0
Identified Veterans		0
COMPASS Applications		27
<u>Recovery Units – HOPE & HEART</u>	HOPE	HEART
Total Number of Residents HOPE/HEART	27	5
Average Daily Number of Residents participating in HOPE/HEART	17	3
Admissions:	10	1
Discharges:	7	3
Parole/Maximum	2	0
Misconduct	1	2
Discharge by Staff	0	0
Medical	1	0
Habeas	0	0
Self-Request to General Population	2	1
Self-Request to MC3/WC3	1	0
Bail	0	0
TOT State Facility	0	0
Discharged Graduates	3	0
<u>Paroled:</u>		
Home	1	0
Residential Treatment	0	0
Recovery House	0	0
TOT Other County/PA or NJ	1	0
<u>Vivitrol:</u>		
Received medication: 3 (1 male; 2 females)		
MC3 -0, WC3 - 0, HOPE - 0, HEART - 1, GOP - 2 (1 male, 1 female @BCCF), Drug Court -0		
Bloodwork refused: 0		

Subutex:		
Total number of inmates treated: 68 (40 males; 28 females)		
Total number of inmates discontinued: 36 (21 males; 15 females)		
Released: 8 (5 males; 3 females)		
Tapers Only: 28 (16 males; 12 females)		
Diversion: 0		
Narcan:		
1 male July 30, 2020 -- sheet given after stats were entered; 1 male August 4, 2020.		

PRIMECARE – CORRECTIONAL MENTAL HEALTH SERVICES: August 2020

Current Census	630
Intake Referral Received	138
Intake Assessments Completed	196
Inmate Request Form Referrals Received	262
Inmates Seen by Psychologist/Psychologist Rounds	687
Inmates Seen by LCSW	872
Inmates Prescribed Psychotropic Medications	257
Involuntary Medication/304 Commitment	0
Inmates Enrolled In Group Counseling – Male/Female	0
Inmates on SPMI	68
Community Treatment Arrangements	1
Psychiatric Hospitalizations-302 commitment	0
Psychiatric Hospitalizations-303 commitment	0
Psychiatric Hospitalizations-304 commitment	1
Psychiatric Hospitalizations-402 commitment for NSH wait list	6
Dr. Cassidy Court Ordered Evaluations	4
Dr. Markey Competency Evaluations	9
Court Ordered Mental Health Assessments	78
Referral to VA	3
911 Alerts	9

** The 911 Suicide Hotline has experienced nine (9) calls in the month of August totaling 44 calls year to date.

CORRECTIONS TRAINING ACADEMY August 2020

<u>Course Type</u>	
Mandatory In-Service	24.0
Basic Training	0.0
Other	136.0
Total	160.0

TOURS, RECOGNITIONS AND OFFICIAL VISITS TO THE DEPARTMENT OF CORRECTIONS

There were zero (0) tours of the Correctional Facilities in the month of August.

ASSAULT/MISCONDUCTS

There were four (4) offender on offender and one (1) offender on staff assaults/misconducts in August 2020. There was one (1) injury sustained requiring attention beyond basic first aid.

PROJECTS UPDATE August 2020

BCCF:

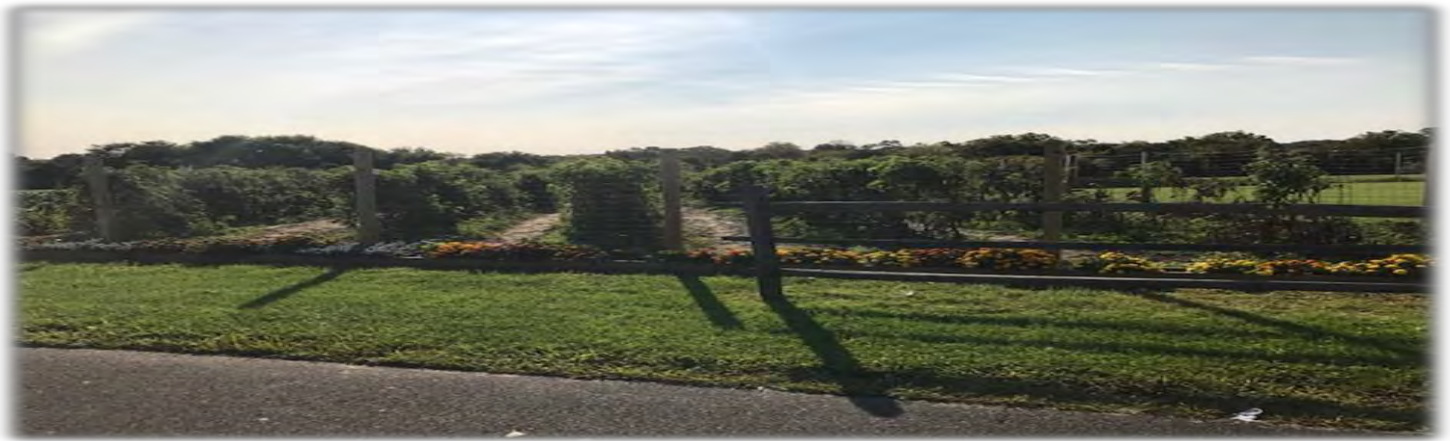
The Bucks County Women's Correctional Facility expansion:

As per the Project Manager, 61% of the project is completed.

Projected Substantial Completion Date: June 17, 2021.

Steel erection is at 95% completion. The Perimeter Security Fencing has begun. Roof Construction was mobilized on site August 31, 2020. Both the electrical and plumbing portion of the project are progressing with minimal issues to report.

GARDEN CHART



ITEM	JAN	FEB	MAR	APR	MAY	JUNE	JULY	AUG	SEP	OCT	NOV	DEC	Total
Lettuce (lbs)													0
Eggplant (lbs)							35	150					185
Cucumber (lbs)						28	806	223					1057
Tomatoes (lbs)							205	2534					2739
Sweet & Hot Peppers (lbs)							49	201					250
Green Peppers (lbs)							116	143					259
Kale (lbs)						166	207	149					522
Swiss Chard (lbs)						187	166	142					495
Squash (lbs)							57	110					167
Melons (lbs)							59	341					400
Spinach (lbs)													0
Zucchini (lbs)						152	1524	151					1827
Cherry Grape Tomatoes (lbs)							48	212					260
Green Beans (lbs)													0
Dill					3	10	4	1					18
Garlic (lbs)						4	56						60
Thyme (lbs)						3	3	4					10
Rosemary (lbs)					1	6	11	9					27
Chives (lbs)					7	11	12	11					41
Cilantro (lbs)					3	10	7	3					23
Basil (lbs)						9	14	7					30
Parsley (lbs)													0
Sage (lbs)						4	9	8					21
Oregano (lbs)						6	8	10					24
Asparagus (lbs)					16	22	4						42
Arugula (lbs)					2	38	51	56					147
Broccoli													0
Cauliflower													0
Total Produce					32	656	3451	4465					8604
Total Compost (lbs)	926	1198	1118	941	886	799	1088	1234					8190

DEPARTMENT OF CORRECTIONS

AUGUST 2020

OUT OF COUNTY PRISON HOUSING COSTS

MONTH	2016	2017	2018	2019	2020
January	\$59,550	\$145,011	\$298,727	\$166,290	\$47,185
February	\$71,025	\$160,771	\$325,283	\$149,090	\$43,250
March	\$67,875	\$190,084	\$398,594	\$126,870	\$26,050
April	\$69,450	\$201,123	\$339,626	\$97,630	\$1,500
May	\$79,125	\$286,104	\$408,234	\$99,655	\$0
June	\$79,725	\$356,337	\$366,754	\$67,260	\$0
July	\$63,825	\$424,107	\$232,715	\$63,925	\$0
August	\$71,504	\$434,738	\$202,330	\$60,850	\$0
September	\$131,594	\$424,735	\$146,453	\$75,725	
October	\$154,713	\$404,785	\$112,442	\$75,210	
November	\$147,383	\$404,286	\$75,940	\$78,955	
December	\$144,870	\$345,662	\$144,640	\$55,660	
Total:	\$1,140,639	\$3,777,743	\$3,051,738	\$1,117,120	\$117,985

WORK RELEASE

	2016	2017	2018	2019	2020	
					August	YTD
Net Inmate Wages	\$861,210	\$848,427	\$738,517	\$727,711	\$25	\$96,523
Court Costs, Fines & Restitution	\$170,595	\$171,237	\$145,084	\$139,742	\$0	\$16,489
Van - shuttle to/from work	\$12,884	\$8,864	\$4,950	\$5,394	\$0	\$768
Board Paid to County (Revenue)	\$267,858	\$258,652	\$223,907	\$223,098	\$25	\$30,777

PER DIEM CONFINEMENT REVENUE

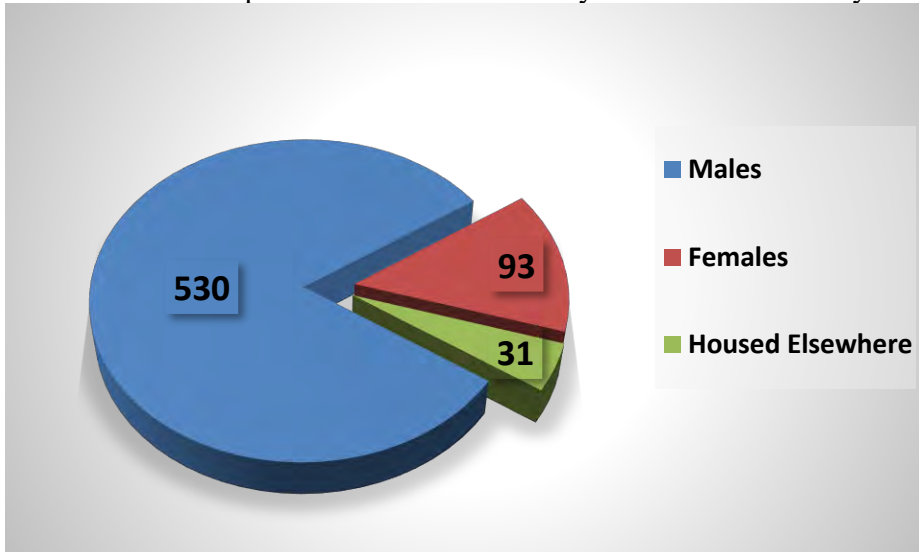
	2016	2017	2018	2019	2020	
					August	YTD
DUI and Weekender Programs	\$2,254	\$1,735	\$1,390	\$799	\$0	\$264
House Arrest	\$586,109	\$550,994	\$555,436	\$419,885	\$26,526	\$197,204

PRISONER HEALTHCARE – PrimeCare: August 2020

YEAR: 2020	JAN	FEB	MAR	APR	MAY	JUN	JUL	AUG	SEP	OCT	NOV	DEC
Intake Screens	525	505	356	97	143	231	325	404				
Nurse Sick Call	311	289	316	233	197	199	215	313				
Provider Physicals	227	227	186	49	98	130	182	190				
Provider Sick Call	628	545	629	1023	569	431	542	616				
Provider Chronic Clinic	147	123	110	68	71	88	125	118				
TB Testing - PPD Planted	611	517	349	110	117	182	249	452				
TB Testing - Positives	8	7	10	2	6	5	4	4				
Chest X-Rays	24	8	10	2	6	6	6	10				
TB Treatment	0	0	0	0	0	0	0	0				
Syphilis (RPR) Testing	52	61	29	15	44	90	113	21				
HIV Testing	53	69	32	15	48	99	117	132				
New Diagnosis HIV Positive	0	0	0	0	0	0	1	0				
Known HIV Positive Patients	13	13	15	9	10	8	10	13				
Chlamydia and Gonorrhea Testing	441	458	320	82	115	216	289	339				
Chlamydia +	8	6	11	1	3	4	11	11				
Gonorrhea +	4	3	3	1	0	2	2	3				
Total STD Treatment	5	6	6	2	2	4	3	7				
Total Reportable Comm. Diseases	13	9	14	2	4	6	16	15				
Medical Isolation	10	7	5	237	187	105	346	425				
Positive MRSA Infections	3	1	1	0	1	2	1	5				
Facility Acquired MRSA Infections	1	0	1	0	1	0	1	3				
Hepatitis A Vaccinations	19	12	12	1	3	3	5	4				
Total Vaccinations	28	37	25	2	4	3	5	4				
Optometrist Clinic	0	10	0	0	0	0	6	0				
Pregnant Patients	8	7	6	1	2	4	4	5				
OB/GYN - On Site	15	20	12	4	0	3	4	5				
OB/GYN - Off Site	0	1	1	0	0	0	1	0				
Dental Clinic	160	162	161	63	146	102	125	134				
Outside Physician Consults	20	47	44	3	2	7	11	13				
X-Ray/ Imaging Services	55	37	34	9	14	23	22	38				
ER Visits	13	11	12	7	11	9	12	21				
ER Visits Via Ambulance	5	3	5	2	5	2	9	9				
Hospital Admissions	7	6	5	1	7	4	8	9				
Deaths	0	0	0	0	0	0	0	0				
Total Number of Admissions	551	536	366	101	154	257	381	435				
Average Daily Population - BCCF	794	780	754	581	508	531	592	613				
Average Daily Population - M/WCCC	210	209	189	126	79	58	52	54				
Total Population	1004	989	943	707	587	589	644	667				

Section #2. CORRECTIONAL FACILITY

There were no escapes from the Bucks County Correctional Facility during the month of August 2020.



TREATMENT PROGRAM SERVICES

Activities and services provided during August 2020

A.B.E/GED Female class – currently suspended.

A.B.E/GED Male class– currently suspended.

Anger Management – currently suspended.

Child Services Visits – currently suspended.

Computer Assisted Learning/Literacy Program- currently suspended.

Decisions Group – currently suspended.

Domestic Relations - currently suspended.

Intake Classifications – (397) intake classifications were completed during this month.

Life Abundant/Women – currently suspended.

Life Abundant/Men– currently suspended.

Moving Forward – currently suspended.

OLMC Mentoring – currently suspended.

Religious Services – currently suspended.

School Age Youth – currently suspended.

STOP – currently suspended.



General Library Use August 2020

Men	Women	Inmate Workers	Total
0	0	0	0
<u>LIBRARY</u>			
<u>USAGE</u>			

Law Library Use

Men	Women	RHU	MHU	Total
83	2	2	1	88

Circulation

General	Total
0	0

Inter-Library Loan

Requests Sent	0
Requests Received	0

Totals to Date June 20, 1985 to August 31, 2020

Inmate Use of the Library	604,799
Law Library Use	98,153
Circulation	819,074

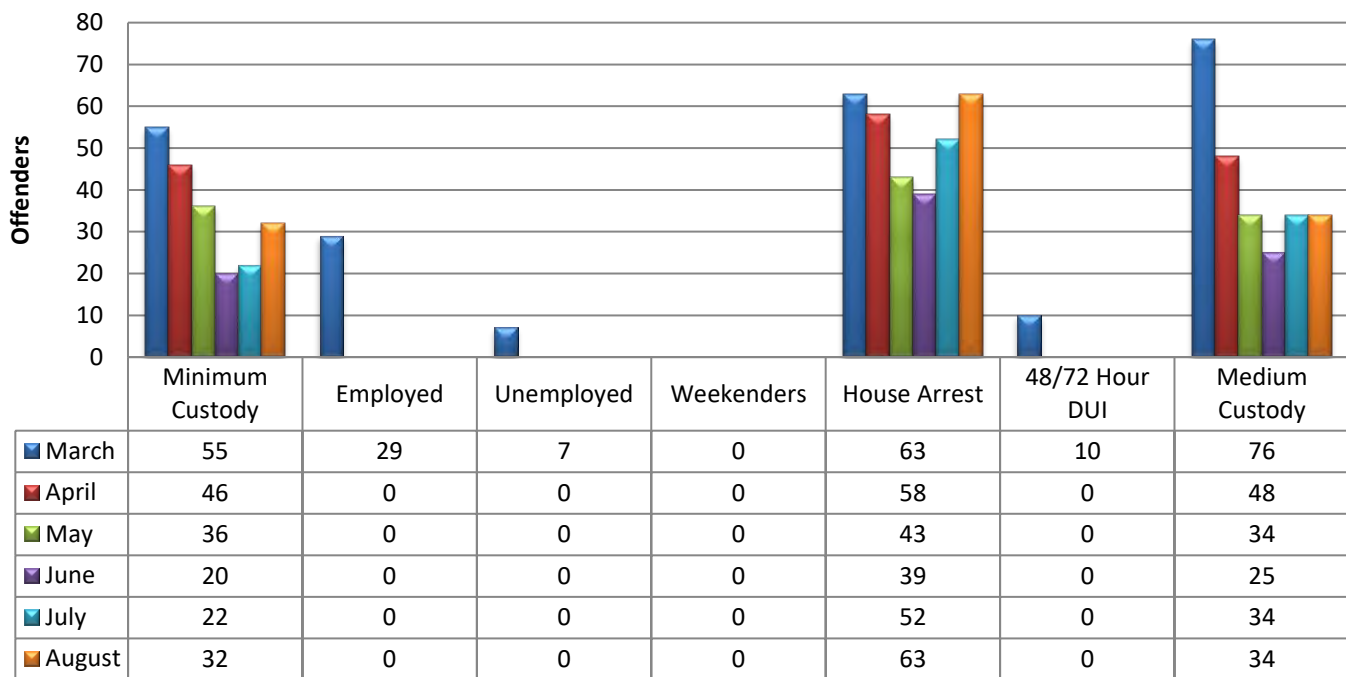
- Due to COVID-19, physical access to the library has been limited. Law library was available through written communication.

Section # 3 COMMUNITY CORRECTIONS

AUGUST 2020

Resident New Job Starts	0
New Admissions – MCCC/WCCC	25
Releases/Transfers	13
Un-sentenced	0
Weekenders	0
48 Hour DUI's	0
72 Hour DUI's	0
Minimum Custody- Men	32
Minimum Custody- Women	0
Medium Custody- Men	34
House Arrest	63
Last Day of August:	
MCCC	66
WCCC	0

Population Supervised by Community Corrections



WORK RELEASE STATUS

August Work Release		
Employment Categories	Male Residents	Female Residents
Landscaping	0	0
Building/Trades/Manufacturing/Labor	0	0
Restaurant/Retail	0	0
Professional	0	0
Subtotal	0	0
TOTAL	0	

As of August 31, 2020, there were thirty-two (32) male residents classified as minimum custody and housed at the Men's Community Corrections Center. Due to the COVID 19 all work release, community service and transfers were suspended.

As of August 31, 2020, there were zero (0) females residents housed at the Women's Community Corrections Center. (Note: In April, due COVID-19 the nine (9) female offenders at the Women's Center were transferred to BCCF for staffing / housing purposes.)

Walk-away activity for the month August 2020:

Walk-away/Escape: 0

Apprehensions>Returns: 0

Program Services

Education

Education Programming remained suspended during the month of August due to COVID-19.

Community Service

Please note: Community Service details remained suspended during August due to COVID-19.

Institutional Jobs

There were 79 offenders that completed 8,060 hours in institutional jobs in August.

Weekenders

There were zero (0) weekenders in the month of August.

VITA Decisions

Please note: Outside Programming remained suspended during the month of August due to COVID-19.

Furloughs

There were zero (0) court ordered furloughs for the month of August.

House Arrest

During the month of August 2020, there were 44 offenders placed on house arrest.

**INSTITUTIONAL EMPLOYMENT & COMMUNITY SERVICE PERFORMED FOR
AUGUST**

<u>INSTITUTIONAL</u>			
Site	<u># of Residents</u>		<u># of hours worked</u>
Kitchen (MCCC)	19		2573
Bakery (MCCC)	8		735
Garden (MCCC)	4		336
Sanitation (MCCC)	16		3024
Sanitation (WCCC)	0		0
Lobby (BCCF)	10		664
Aramark Crew (MCCC)	11		133
Aramark Grounds Crew (CCC)	5		196
Aramark Crew (BCCF- Special Project)	2		385
Range Detail	4		14
TOTALS:	79		8,060
<u>COMMUNITY</u>			
Community Service suspended as of 3/13/20			
Fairless Hills Fire Company	0		0
Lenape Valley	0		0
Pennsbury Manor	0		0
VFW Post 6493	0		0
Washington Crossing Park	0		0
TOTALS:	0		0

Community Service Year to Date	YTD- Hours
Fairless Hills Fire Company	192
Lenape Valley Foundation	336
Pennsbury Manor	232
VFW Post 6493	174
Washington Crossing Park	264
TOTALS	1,198